

Boston Camera Club

Past and Present exhibition at the Wellesley Free Library

Online Reception: June 14, 2022

Thanks To:

Past and Present Exhibition Committee: Julie Berson, Hugh Fanning, Tom Hill, Beth Luchner, Emory Petrack

Volunteers helping to hang the exhibit:
Maureen Fanning, Lucas Hill, Nancy Rich

Print Loans or Permission to reproduce prints:

Tony Decaneas - Bradford Washburn print
Crista Dix, Griffin Museum of Photography - Arthur Griffin reproduction
Lou Jones
Gus Kayafas - 'Doc' Edgerton print
Abbie Sewall - Emma Sewall print
Massachusetts Historical Society - Francis Blake digital file
Minneapolis Institute of Art - Sarah J. Eddy digital file
National Archives - F Holland Day digital file

Thanks to

BCC Archival Committee:

Erik Gehring

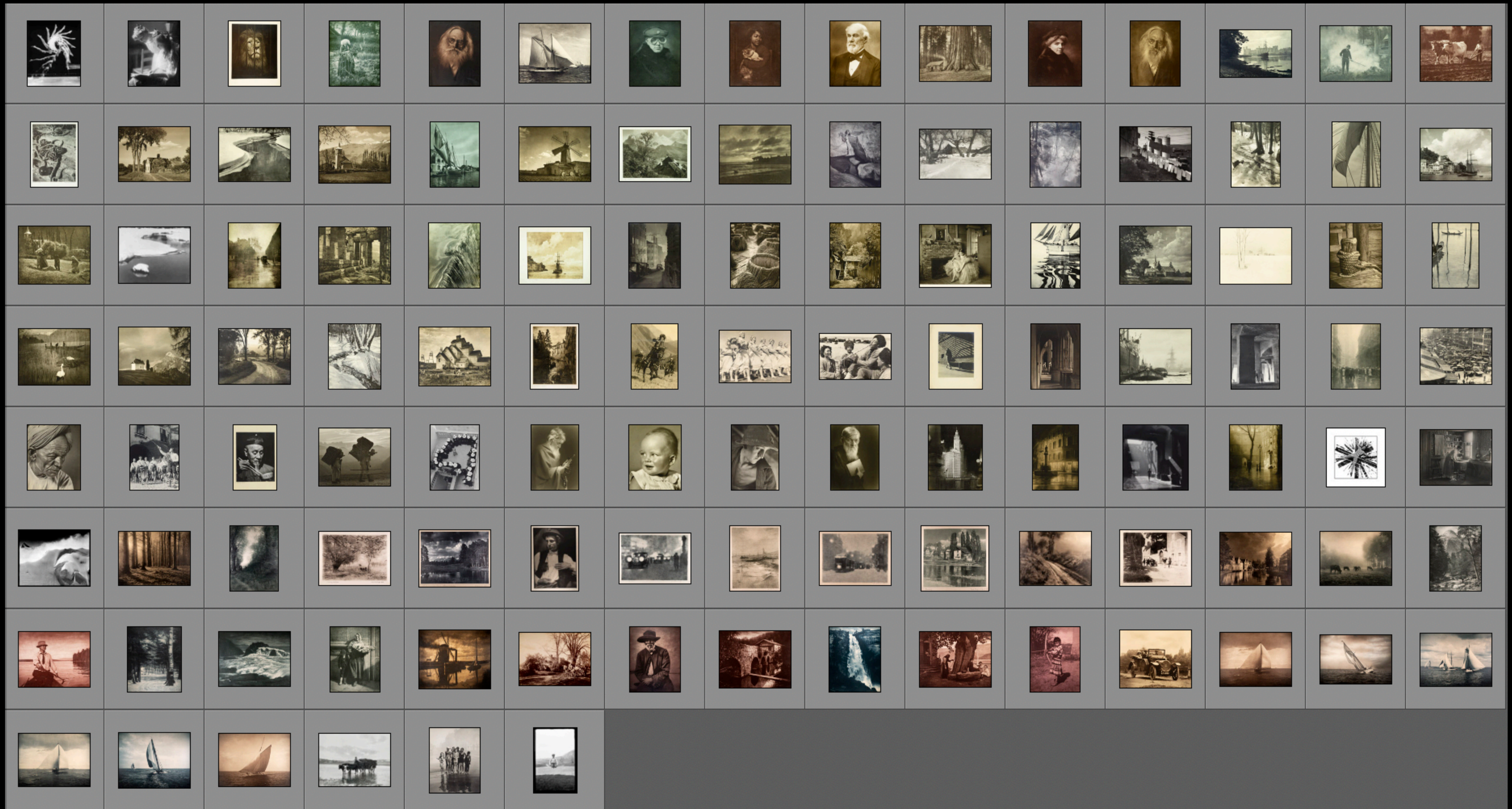
Beth Luchner

Jim Luedke

Henry Weisenburger

Never Too Late To Be A Poet

The Boston Camera Club was founded in 1881.
At the end of its 140th season the ***Past and Present*** exhibition pays tribute to the club's legacy of photography.



12 Images on display representing the club's history



5 Honorary Members from the past



Francis Blake, Jr.
1850-1913



F Holland Day
1864-1933



Arthur Griffin
1903-2001



Harold 'Doc' Edgerton
1903-1990



Bradford Washburn
1910-2007

4 prominent members from the past



Emma D. Sewall
1836-1919



Sarah J. Eddy
1851-1945



Horace A. Latimer
1860-1931



Frank R. Fraprie
1874-1951

2 photographers represent the club's Exhibitions, Salons, and its Collection of prints



Alexander Niklitschek, *Mariahilfer - Street*
Vienna circa 1930s



P. Kudoyaroff, *Shephards in the Kara Kum*
Moscow, USSR circa 1940

1 Current Honorary Member



Lou Jones, *Black/White*



Eldad Cohen, *A drive in the park*



Attributed to H. A. Latimer



Eldad Cohen, *Eliot Bridge, Cambridge, MA*



H. A. Latimer, *Old Bridge, Biarritz, France*



A Letter to King Charles I from Boston
Poem read by Pamela Trosino



Laura Ferraguto, *Ice Patterns, Little River*



Frank R. Fraprie, *Quiescence*



The Mystery of Water

Poem read by Elsa Bengel

Laura Ferraguto, *Ice Patterns*, Little River



Glacier and Power Lines
Bert Halstead



Bradford Washburn
*After the Storm, Climbers on the Doldenhorn,
Switzerland, 1960*



Bert Halstead, Ballet Practice



Francis Blake
Benjamin Sewall Blake jumping



High-Rise Buildings
Dominic Vecchione



Wrigley Building, Chicago, Robert Wick



Dominic Vecchione, *Boardwalk*



Frank R. Fraprie, *Abington*



EARLY MORNING DREAM
Poem read by Phyllis Blum

Frank R. Fraprie, *Abington*



Susana Rey Alvarez, *Torero, Arles*



Frank R. Fraprie, *Paestum*